



# PROFILES OF INVESTMENT PROJECTS

## TOURISM

(+992) 37 221-87-32  
(+992) 37 221-87-54  
[INFO@TAJINVEST.TJ](mailto:INFO@TAJINVEST.TJ)  
[INFO@B2B.TJ](mailto:INFO@B2B.TJ)



# CONSTRUCTION OF A TOURIST COMPLEX LLC "SAFEDOB TOUR" IN DISTRICT SHURABAD OF KHATLON REGION *LLC "SAFEDOB TOUR"*

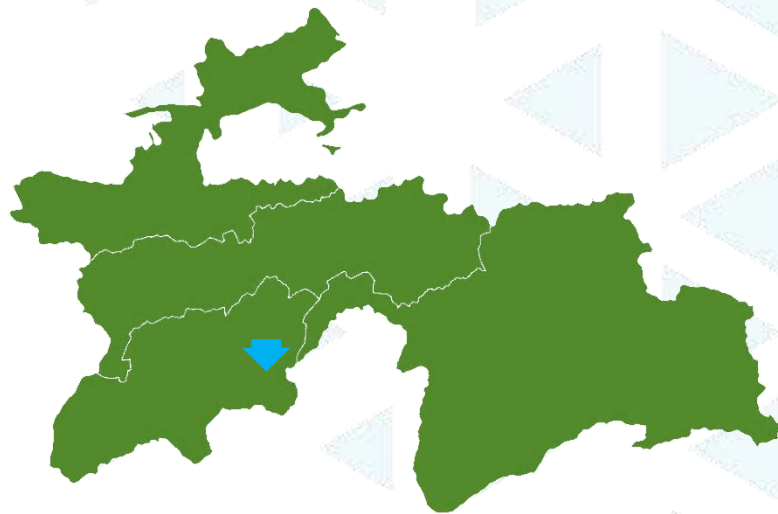


***INVEST IN TAJIKISTAN***  
***LET'S GROW TOGETHER***



**(+992) 37 221-87-32**  
**(+992) 37 221-87-54**  
**INFO@TAJINVEST.TJ**  
**INFO@B2B.TJ**





**OWNERSHIP**  
PRIVATE



**INVESTMENT**  
\$ 2 MLN



**IMPLEMENTATION**  
6 YEARS



## INFRASTRUCTURE



## CONNECTION



## DESCRIPTION

Construction of a tourist base



## FINANCIAL INDICATORS

Payback Period: 2 years  
Net Present Value: \$ 0.3 MLN  
Internal Rate of Return: 18%



## PROJECT STATUS

Business Plan  
Presentation



## SOCIOECONOMIC EFFECT

Creation of more than 25-30 jobs



## BENEFITS & PRIVILEGES

Importation of equipment, equipment and building materials for tourist facilities is exempt from VAT and customs duties  
Income from tourism activities are exempt from income tax for 5 years from the date of state registration  
Exemption from the need to obtain a license when carrying out activities in the field of domestic tourism  
Allocation of land plots to domestic tourism subjects in a simplified manner

**INVEST IN TAJIKISTAN**  
**YOUR INVESTMENT MATTERS**

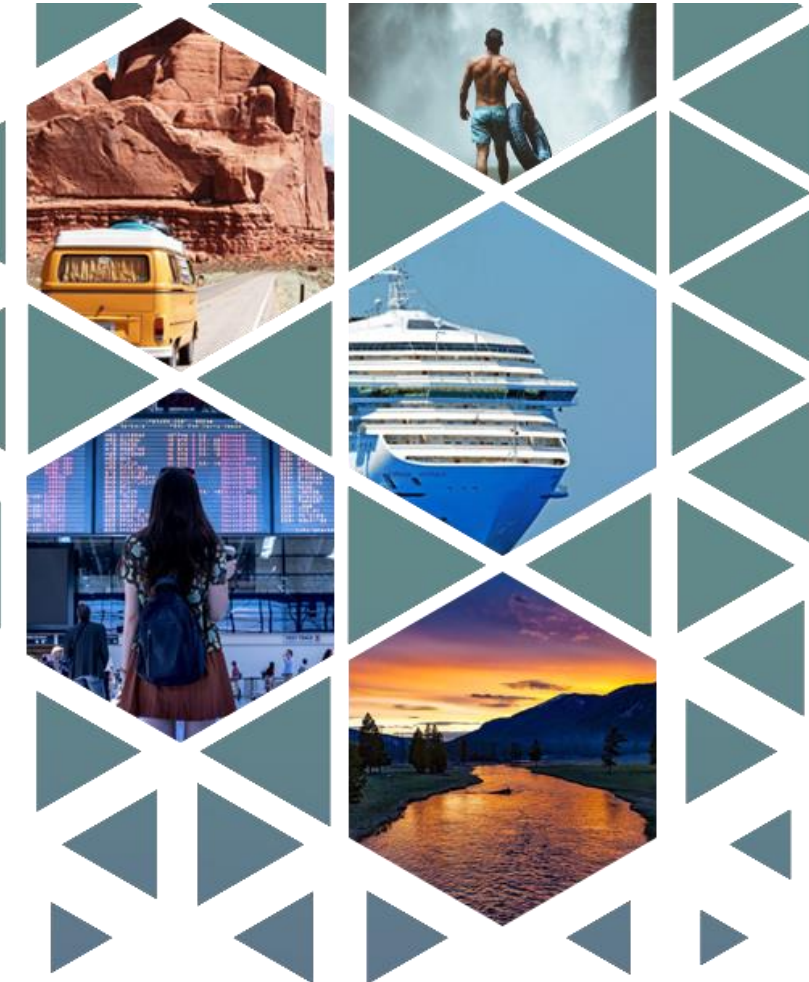
The information provided herein has been prepared in good-faith for information purposes only and none of it shall be treated as an offer or solicitation to deal in any transaction.

# CONSTRUCTION OF THE SANATORIUM "ISTIKLOL"

*FAIZI ISTIKLOL LLC*

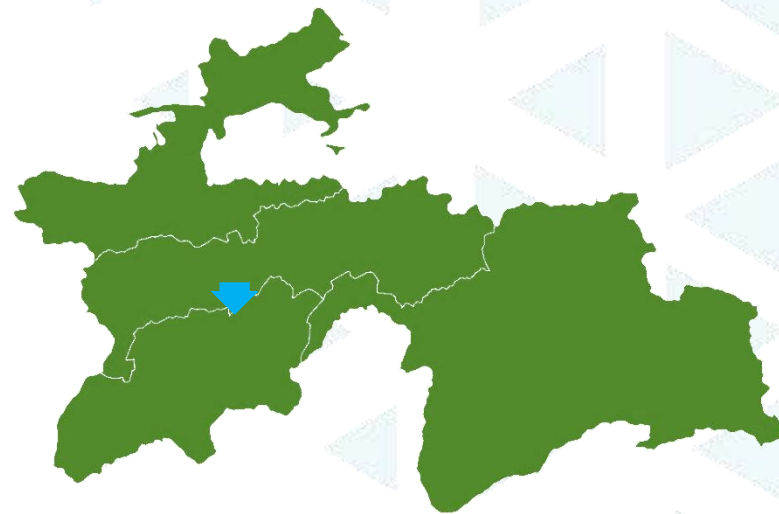


***INVEST IN TAJIKISTAN  
LET'S GROW TOGETHER***



(+992) 37 221-87-32  
(+992) 37 221-87-54  
INFO@TAJINVEST.TJ  
INFO@B2B.TJ





**OWNERSHIP**  
PRIVATE



**INVESTMENT**  
\$ 11 MLN



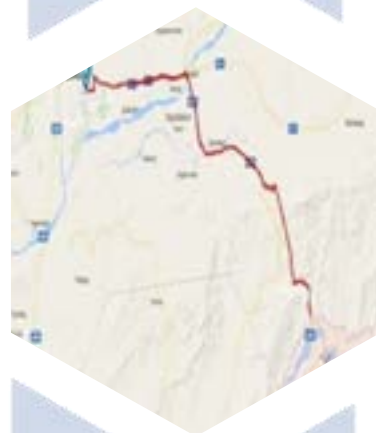
**IMPLEMENTATION**  
3 YEARS



## INFRASTRUCTURE



## CONNECTION



## DESCRIPTION

Creation of a country recreation center, offering health services and leisure services to its guests.



## FINANCIAL INDICATORS

Payback Period: 5 years  
Net Present Value: \$ 0.9 MLN  
Internal Rate of Return: 16.3%



## PROJECT STATUS

Land plot allocated  
Business plan needs to be developed



## SOCIOECONOMIC EFFECT

Creation of more than 70 jobs



## BENEFITS & PRIVILEGES

Importation of equipment, equipment and building materials for tourist facilities is exempt from VAT and customs duties  
Income from tourism activities are exempt from income tax for 5 years from the date of state registration  
Exemption from the need to obtain a license when carrying out activities in the field of domestic tourism  
Allocation of land plots to domestic tourism subjects in a simplified manner

**INVEST IN TAJIKISTAN**  
**YOUR INVESTMENT MATTERS**

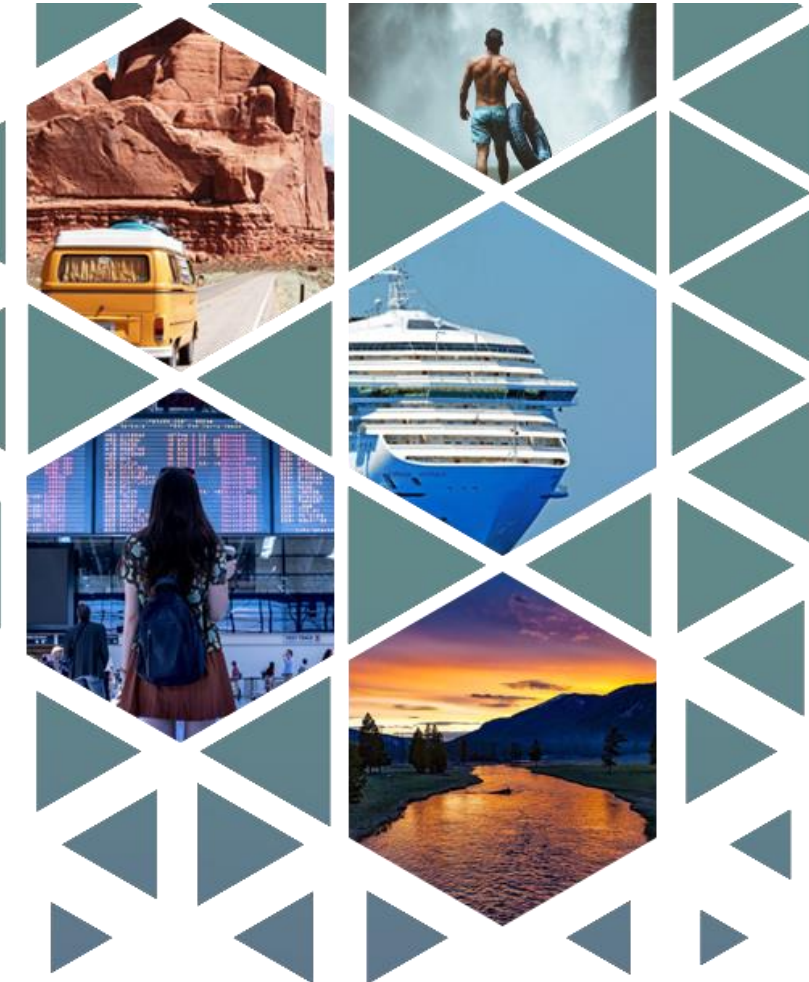
The information provided herein has been prepared in good-faith for information purposes only and none of it shall be treated as an offer or solicitation to deal in any transaction.

# CONSTRUCTION AND MODERNIZATION OF THE TOURIST COMPLEX "GULOBOD"

*TOURIST COMPLEX "GULOBOD"*

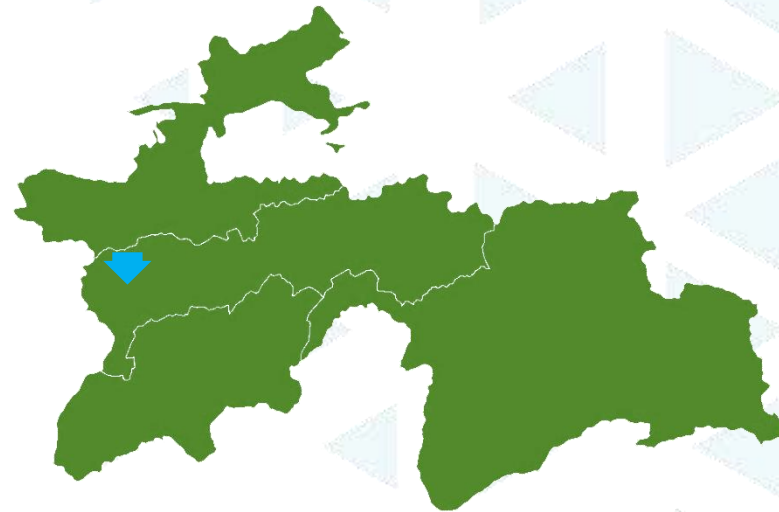


***INVEST IN TAJIKISTAN***  
***LET'S GROW TOGETHER***



(+992) 37 221-87-32  
(+992) 37 221-87-54  
INFO@TAJINVEST.TJ  
INFO@B2B.TJ





**OWNERSHIP**  
STATE



**INVESTMENT**  
\$ 5 MLN



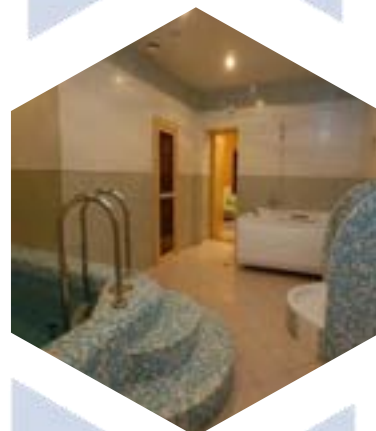
**IMPLEMENTATION**  
2 YEARS



### INFRASTRUCTURE



### CONNECTION



### DESCRIPTION

Construction of a tourist base in the mountain  
– ecological zones



### FINANCIAL INDICATORS

Payback Period: 2 years  
Net Present Value: N/A  
Internal Rate of Return: 35.9%



### PROJECT STATUS

Land plot allocated  
Business plan needs to be developed



### SOCIOECONOMIC EFFECT

Creation of tourism infrastructure  
Creation of more than 40 jobs



### BENEFITS & PRIVILEGES

Exempt from income tax for 5 years from the date of state registration;  
Import of equipment, equipment and building materials for tourist facilities (including hotels, health resorts and resorts, tourist centers and other tourist facilities) is exempt from VAT and payment of customs duties  
A 50% reduction in customs duties on the import of new passenger cars used for tourism purposes.

**INVEST IN TAJIKISTAN**  
**YOUR INVESTMENT MATTERS**

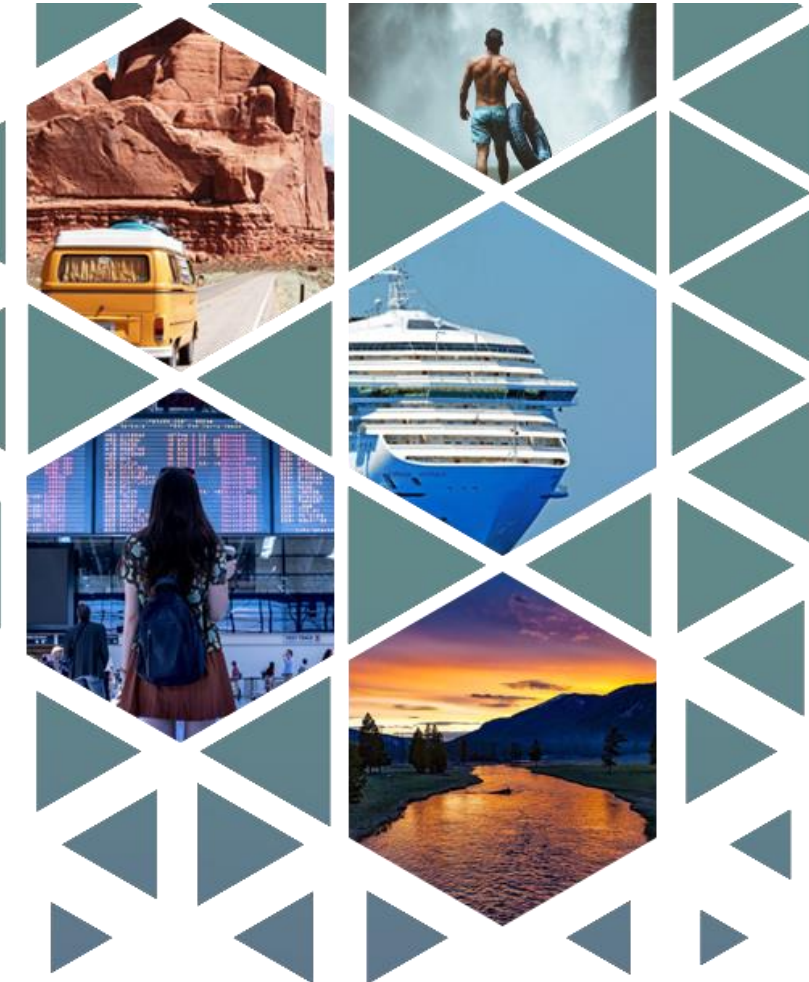
The information provided herein has been prepared in good-faith for information purposes only and none of it shall be treated as an offer or solicitation to deal in any transaction.

# CONSTRUCTION OF A TOURIST CENTER AND FISHING ON THE LANDS OF "HAKIMI"

*TOURIST CENTER "HAKIMI"*

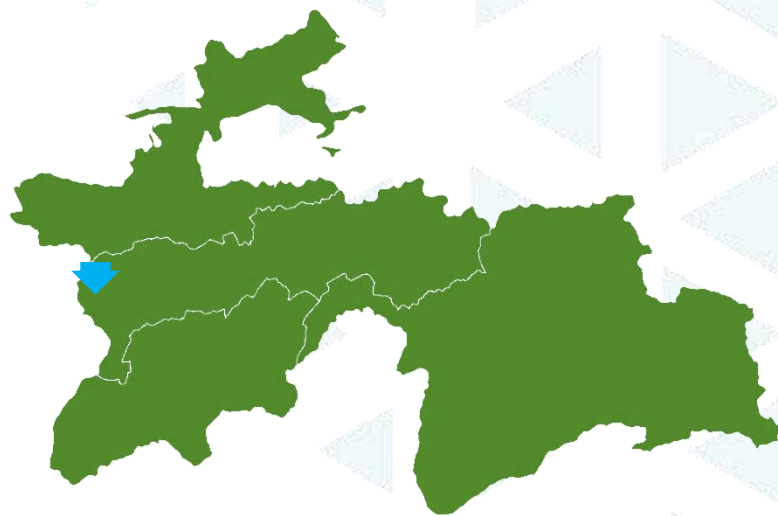


***INVEST IN TAJIKISTAN***  
***LET'S GROW TOGETHER***



(+992) 37 221-87-32  
(+992) 37 221-87-54  
INFO@TAJINVEST.TJ  
INFO@B2B.TJ





**OWNERSHIP**  
STATE



**INVESTMENT**  
\$ 4 MLN



**IMPLEMENTATION**  
1 YEAR



## INFRASTRUCTURE



## CONNECTION



## DESCRIPTION

Construction of a tourist base in the mountain  
– ecological zones



## FINANCIAL INDICATORS

Payback Period: 2 years  
Net Present Value: N/A  
Internal Rate of Return: 44.8%



## PROJECT STATUS

Land plot allocated  
Business plan needs to be developed



## SOCIOECONOMIC EFFECT

Creation of tourism infrastructure  
Creation of more than 30 jobs



## BENEFITS & PRIVILEGES

Exempt from income tax for 5 years from the  
date of state registration;  
Import of equipment, equipment and building  
materials for tourist facilities (including hotels,  
health resorts and resorts, tourist centers and  
other tourist facilities) is exempt from VAT and  
payment of customs duties  
A 50% reduction in customs duties on the  
import of new passenger cars used for tourism  
purposes.

**INVEST IN TAJIKISTAN**  
**YOUR INVESTMENT MATTERS**

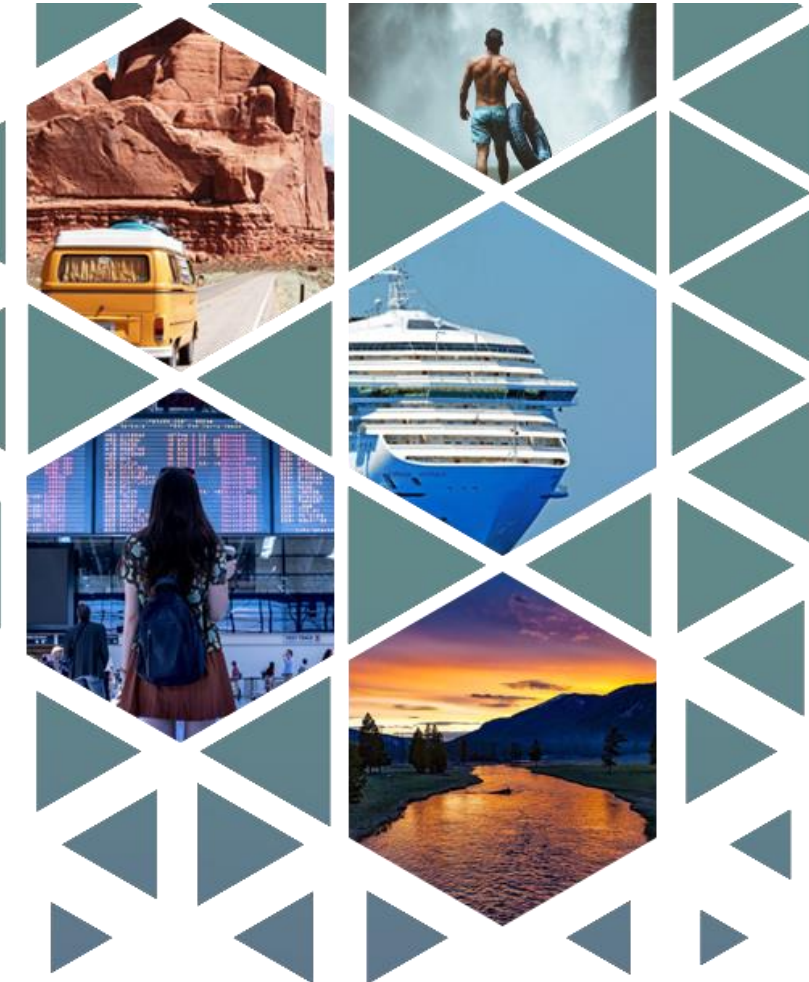
The information provided herein has been prepared in good-faith for information purposes only and none of it shall be treated as an offer or solicitation to deal in any transaction.

# CONSTRUCTION OF A TOURIST BASE

*TOURIST CENTER*

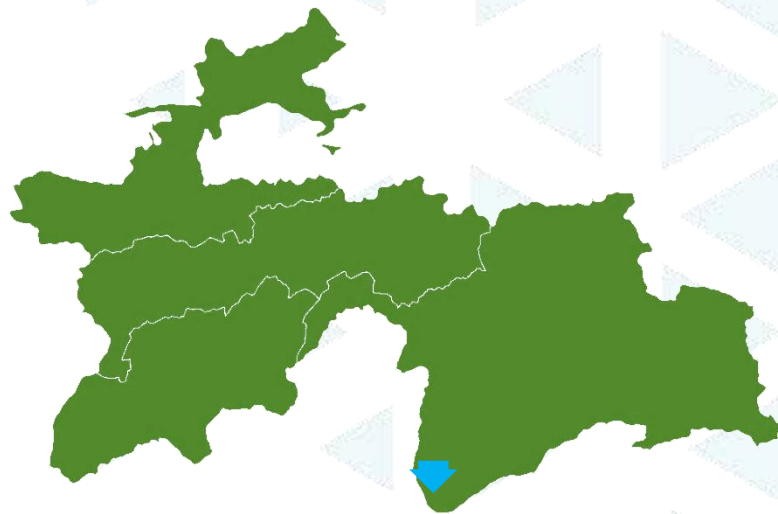


***INVEST IN TAJIKISTAN  
LET'S GROW TOGETHER***



(+992) 37 221-87-32  
(+992) 37 221-87-54  
INFO@TAJINVEST.TJ  
INFO@B2B.TJ





**OWNERSHIP**  
STATE



**INVESTMENT**  
\$ 2.5 MLN



**IMPLEMENTATION**  
1 YEAR



### INFRASTRUCTURE



### CONNECTION



### DESCRIPTION

Construction of a tourist base in the mountain  
– ecological zones



### FINANCIAL INDICATORS

Payback Period: 2 years  
Net Present Value: N/A  
Internal Rate of Return: 71.8%



### PROJECT STATUS

Land plot allocated  
Business plan needs to be developed



### SOCIOECONOMIC EFFECT

Creation of tourism infrastructure  
Creation of more than 50 jobs



### BENEFITS & PRIVILEGES

Exempt from income tax for 5 years from the  
date of state registration;  
Import of equipment, equipment and building  
materials for tourist facilities (including hotels,  
health resorts and resorts, tourist centers and  
other tourist facilities) is exempt from VAT and  
payment of customs duties  
A 50% reduction in customs duties on the  
import of new passenger cars used for tourism  
purposes.

**INVEST IN TAJIKISTAN**  
**YOUR INVESTMENT MATTERS**

The information provided herein has been prepared in good-faith for information purposes only and none of it shall be treated as an offer or solicitation to deal in any transaction.

# CONSTRUCTION OF THE HOTEL "DARAY GURGON"

*HOTEL "DARAY GURGON"*

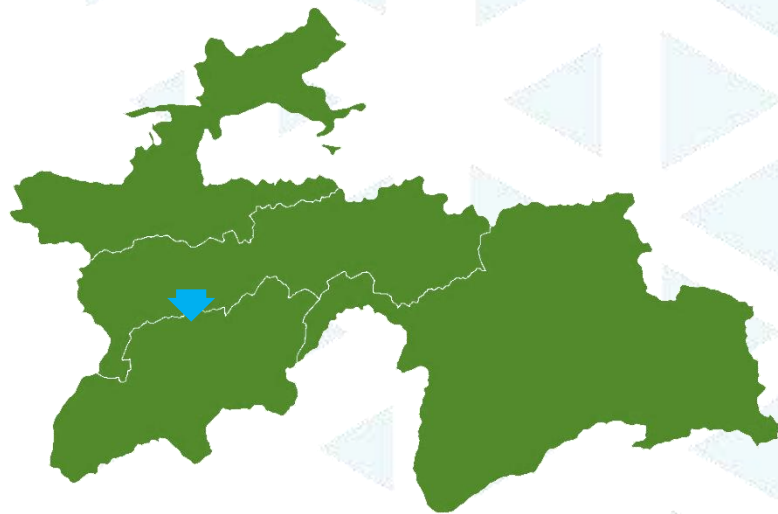


***INVEST IN TAJIKISTAN  
LET'S GROW TOGETHER***



(+992) 37 221-87-32  
(+992) 37 221-87-54  
INFO@TAJINVEST.TJ  
INFO@B2B.TJ





**OWNERSHIP**  
STATE



**INVESTMENT**  
\$ 2.6 MLN



**IMPLEMENTATION**  
1 YEAR



### INFRASTRUCTURE



### CONNECTION



### DESCRIPTION

Construction of a tourist base in the mountain  
– ecological zones



### FINANCIAL INDICATORS

Payback Period: 2 years  
Net Present Value: N/A  
Internal Rate of Return: 71.8%



### PROJECT STATUS

Land plot allocated  
Business plan needs to be developed



### SOCIOECONOMIC EFFECT

Creation of tourism infrastructure  
Creation of more than 50 jobs



### BENEFITS & PRIVILEGES

Exempt from income tax for 5 years from the date of state registration;  
Import of equipment, equipment and building materials for tourist facilities (including hotels, health resorts and resorts, tourist centers and other tourist facilities) is exempt from VAT and payment of customs duties  
A 50% reduction in customs duties on the import of new passenger cars used for tourism purposes.

**INVEST IN TAJIKISTAN**  
**YOUR INVESTMENT MATTERS**

The information provided herein has been prepared in good-faith for information purposes only and none of it shall be treated as an offer or solicitation to deal in any transaction.

## CONSTRUCTION OF THE TOURIST BASE "VORU MARKET" AND "RUI OB"

*TOURIST BASE "VORU MARKET" AND "RUI  
OB"*

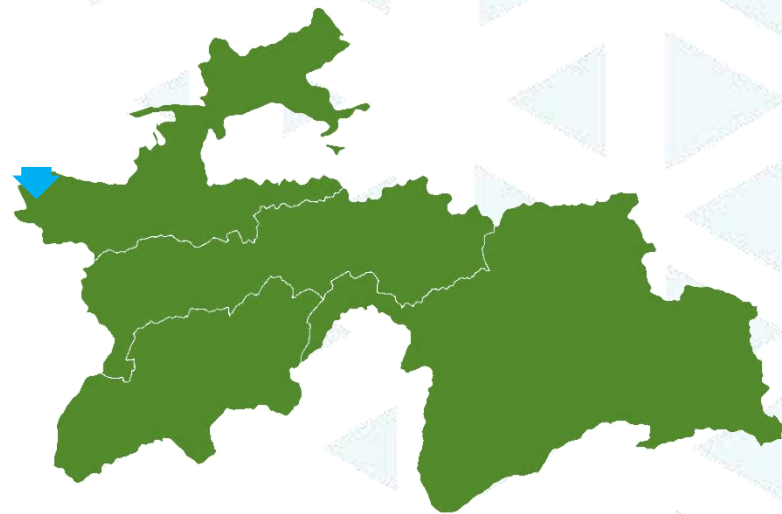


***INVEST IN TAJIKISTAN  
LET'S GROW TOGETHER***



(+992) 37 221-87-32  
(+992) 37 221-87-54  
INFO@TAJINVEST.TJ  
INFO@B2B.TJ





**OWNERSHIP**  
STATE



**INVESTMENT**  
\$ 1.8 MLN



**IMPLEMENTATION**  
1 YEAR



### INFRASTRUCTURE



### CONNECTION



### DESCRIPTION

Construction of a tourist base in the mountain  
– ecological zones



### FINANCIAL INDICATORS

Payback Period: 2 years  
Net Present Value: N/A  
Internal Rate of Return: 91.8%



### PROJECT STATUS

Land plot allocated  
Business plan needs to be developed



### SOCIOECONOMIC EFFECT

Creation of tourism infrastructure  
Creation of more than 50 jobs



### BENEFITS & PRIVILEGES

Exempt from income tax for 5 years from the  
date of state registration;  
Import of equipment, equipment and building  
materials for tourist facilities (including hotels,  
health resorts and resorts, tourist centers and  
other tourist facilities) is exempt from VAT and  
payment of customs duties  
A 50% reduction in customs duties on the  
import of new passenger cars used for tourism  
purposes.

**INVEST IN TAJIKISTAN**  
**YOUR INVESTMENT MATTERS**

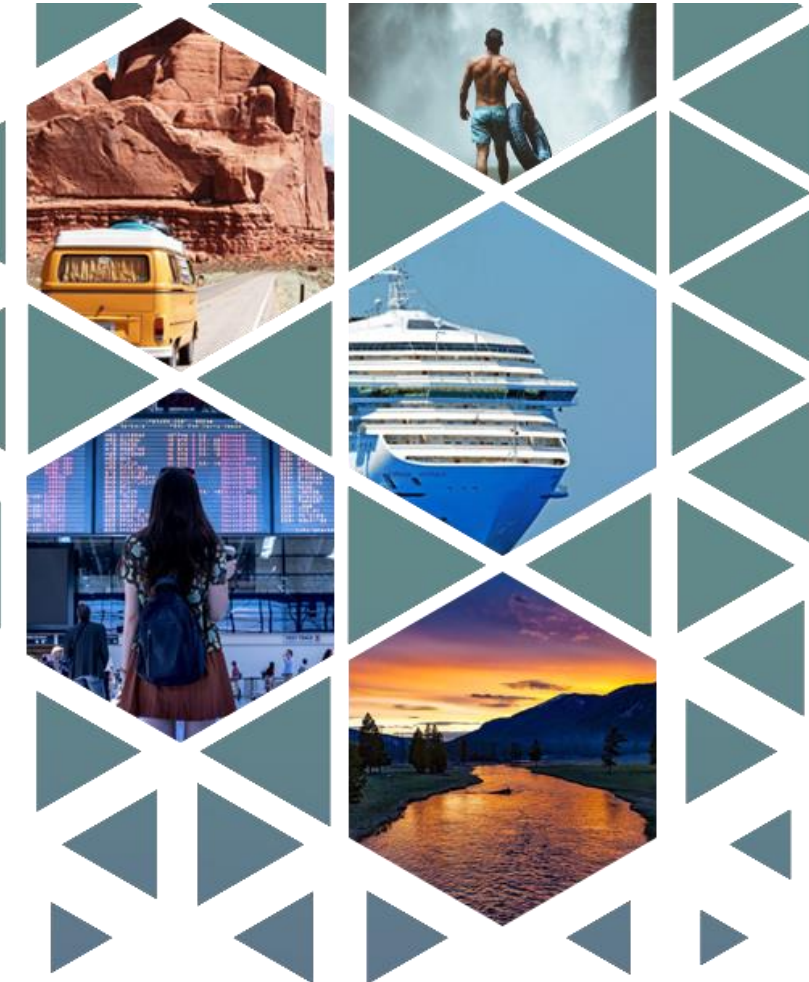
The information provided herein has been prepared in good-faith for information purposes only and none of it shall be treated as an offer or solicitation to deal in any transaction.

# ALPINISTIC TOURIST BASE "ARTUCH"

*"ARTUCH" LLC*

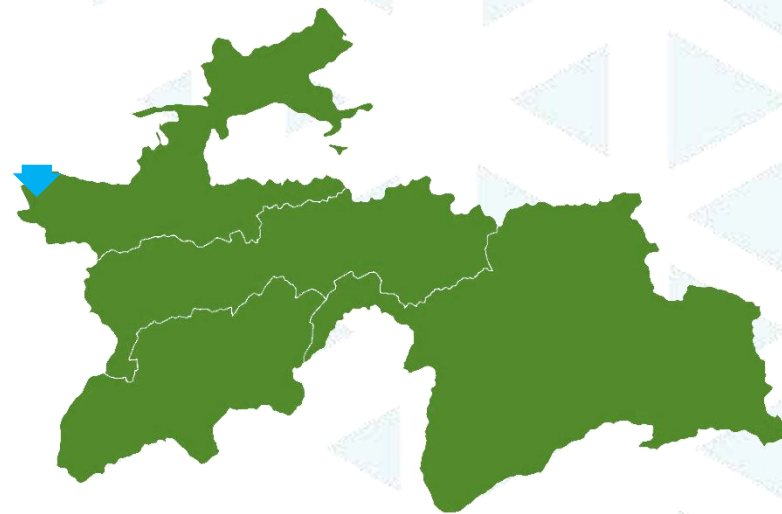


***INVEST IN TAJIKISTAN  
LET'S GROW TOGETHER***



(+992) 37 221-87-32  
(+992) 37 221-87-54  
INFO@TAJINVEST.TJ  
INFO@B2B.TJ





**OWNERSHIP**  
PRIVATE



**INVESTMENT**  
\$ 1.5 MLN



**IMPLEMENTATION**  
1 YEAR



### INFRASTRUCTURE



### CONNECTION



### DESCRIPTION

Complete reconstruction and extension of tourist base



### FINANCIAL INDICATORS

Payback Period: 2 years  
Net Present Value: N/A  
Internal Rate of Return: 50%



### PROJECT STATUS

Land plot allocated  
Business plan exists



### SOCIOECONOMIC EFFECT

Creation of high-quality services in the field of tourism industry of the country  
Creation of more than 40 jobs



### BENEFITS & PRIVILEGES

Importation of equipment, equipment and building materials for tourist facilities is exempt from VAT and customs duties  
Income from tourism activities are exempt from income tax for 5 years from the date of state registration  
Exemption from the need to obtain a license when carrying out activities in the field of domestic tourism  
Allocation of land plots to domestic tourism subjects in a simplified manner

**INVEST IN TAJIKISTAN**  
**YOUR INVESTMENT MATTERS**

The information provided herein has been prepared in good-faith for information purposes only and none of it shall be treated as an offer or solicitation to deal in any transaction.